

SBT Stop 6 Eindhoven Open 2018 (34ft)



Oil Pattern Distance:	34 Feet	Reverse Brush Drop:	34 Feet	Oil Per Board:	50 uL
Forward Oil Total:	13 mL	Reverse Oil Total:	12.8 mL	Volume Oil Total:	25.8 mL
Forward Boards Crossed:	260 Boards	Reverse Boards Crossed:	256 Boards	Total Boards Crossed:	516 Boards

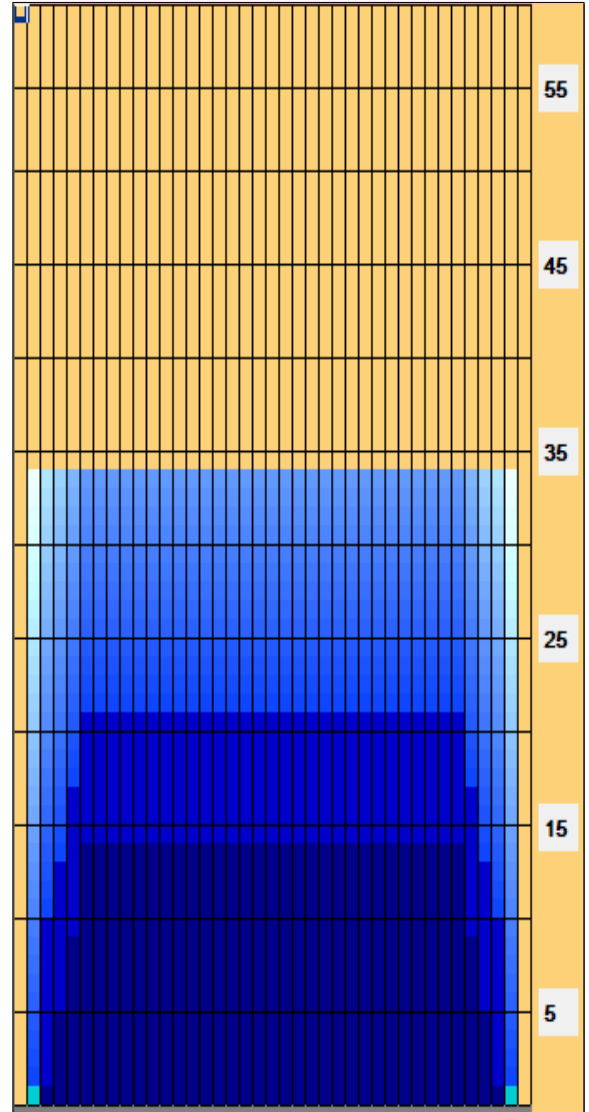
	Start	Stop	Loads	Speed	Crossed	Start	End	Feet	T.Oil
1	2L	2R	2	14	74	0.0	1.9	1.9	3700
2	4L	4R	2	14	66	1.9	5.8	3.9	3300
3	5L	5R	2	14	62	5.8	9.7	3.9	3100
4	6L	6R	2	18	58	9.7	14.8	5.1	2900
5	2L	2R	0	18	0	14.8	24.0	9.2	0
6	2L	2R	0	26	0	24.0	34.0	10.0	0

Conditioner:
Type In or Select One

TransferType:
Type In or Select One

Forward
Reverse
Combined
Buff

	Start	Stop	Loads	Speed	Crossed	Start	End	Feet	T.Oil
1	2L	2R	0	30	0	34.0	21.0	-13.0	0
2	6L	6R	2	14	58	21.0	17.1	-3.9	2900
3	5L	5R	2	14	62	17.1	13.2	-3.9	3100
4	4L	4R	2	10	66	13.2	10.4	-2.8	3300
5	3L	3R	2	10	70	10.4	7.6	-2.8	3500
6	2L	2R	0	10	0	7.6	0.0	-7.6	0



Item	3L-7L:18L-18R	8L-12L:18L-18R	13L-17L:18L-18R	18L-18R:17R-13R	18L-18R:12R-8R	18L-18R:7R-3R
Description	Outside Track:Middle	Middle Track:Middle	Inside Track:Middle	Middle: Inside Track	Middle:Middle Track	Middle:Outside Track
Track Zone Ratio	1.43	1	1	1	1	1.43

